



## Curve Center

After a well-rounded, tech-savvy transformation, a bland townhome turns into the life of the party.

A round table attached to a trough sink is the focal point of Chris Newton's revamped townhome kitchen.

### for more ideas

To see a slideshow of more small kitchens, go to [KitchenBathIdeas.com/smallkitchens](http://KitchenBathIdeas.com/smallkitchens).

**A KITCHEN RIGHT OUT OF A TYPICAL 1980S** apartment confronted Chris Newton, a native Briton, when he purchased a townhome in Thousand Oaks, California. The room's predictable boxy layout, light oak cabinets, fluorescent lighting, and popcorn ceiling didn't suit the tech-loving bachelor's lifestyle.

For help, Chris turned to Elina Katsioulas-Beall, a certified kitchen designer (CKD) and member of the National Kitchen & Bath Association (NKBA). "I got meself a townhouse," he told her, "and I wouldn't mind an open space for all my buddies to stand

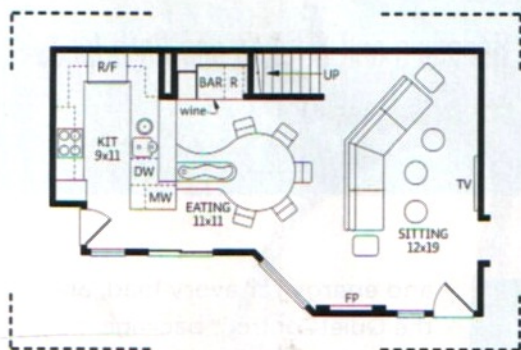
around and have drinks—and at the same time, sit down for dinner and watch movies."

Chris wanted a bar for drinks, a table for dinner, and lots of electronics and appliances, including a wine cooler, warming drawer, and in-counter steamer.

"Very few people find pure delight in—and are willing to explore—appliances that are technically savvy and efficient for their lifestyle," Katsioulas-Beall says. "Chris is one of those few people."

But he was also interested in form, especially curves. Chris hoped to minimize straight lines

## small kitchen



CLOCKWISE, FROM TOP LEFT: The U-shape work core is compact and efficient, with just a few steps between the main sink and appliances. At the main sink, set next to a built-in steamer, dark Bahia granite meets light carrara marble. The bar, with a wine cooler and undercounter fridge, is a popular spot when Chris entertains. The striking trough sink starts lively conversations and eases party prep. The cooktop backsplash is thermofoil covered by a layer of tempered glass.

and sharp angles, preferring to play up rounded shapes. This vision of a clean-lined, curvy kitchen full of high-tech cooking gadgets and geared to entertaining presented a design challenge, especially within the confines of a townhome. "To mix function with style, we opted for a modern, U-shape kitchen," Katsioulas-Beall says.

In the new floor plan, the kitchen opens to a sitting/entertainment room, with a curvaceous island/table connecting the two spaces.

Gentle curves complement the smooth profiles of flat-panel cabinetry and glossy granite countertops in a space purposefully lacking rigid lines. "There are really no sharp edges anywhere," Chris says. "The countertops have a slightly burred edge, and that's about as sharp as it gets. Even the handles on the drawers and cabinets bow outward."

The focal-point round table has a granite top and is attached to a marble island that holds a built-in surprise—a sinewy trough-style sink. The sink, the favorite feature of both the homeowner and the designer, inspires conversation much like a sculpture. But it works hard, too, especially when filled with ice to keep beverages cold at parties.

"If you look at this capricious sink, it is unusual by itself, but you can certainly see it used occasionally on an island counter," Katsioulas-Beall says. "If you look at a round granite table, it is also sometimes an element seen in open-plan kitchens. It's the combination of the two—and the shape of their curves—that creates the surprise."

Something surprising is just what this once-predictable kitchen needed. **KBI**

RESOURCES BEGIN ON PAGE 130.