

HOME & LIVING FEATURING

KITCHEN

Volume 25 No 5

\$10.95

Trendsideas.com

TRENDS



\$10.95US 92>



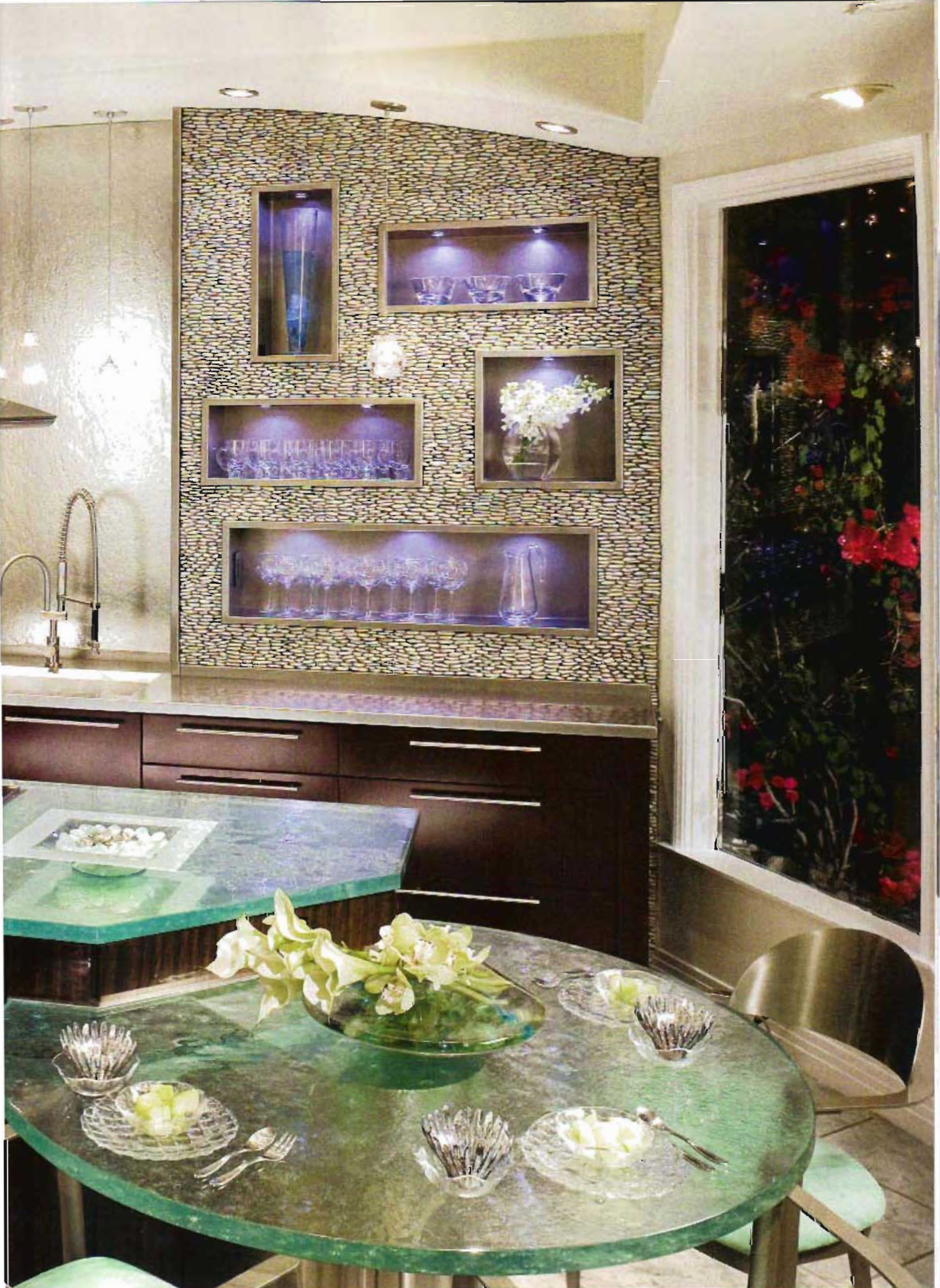
0 74470 38123 5

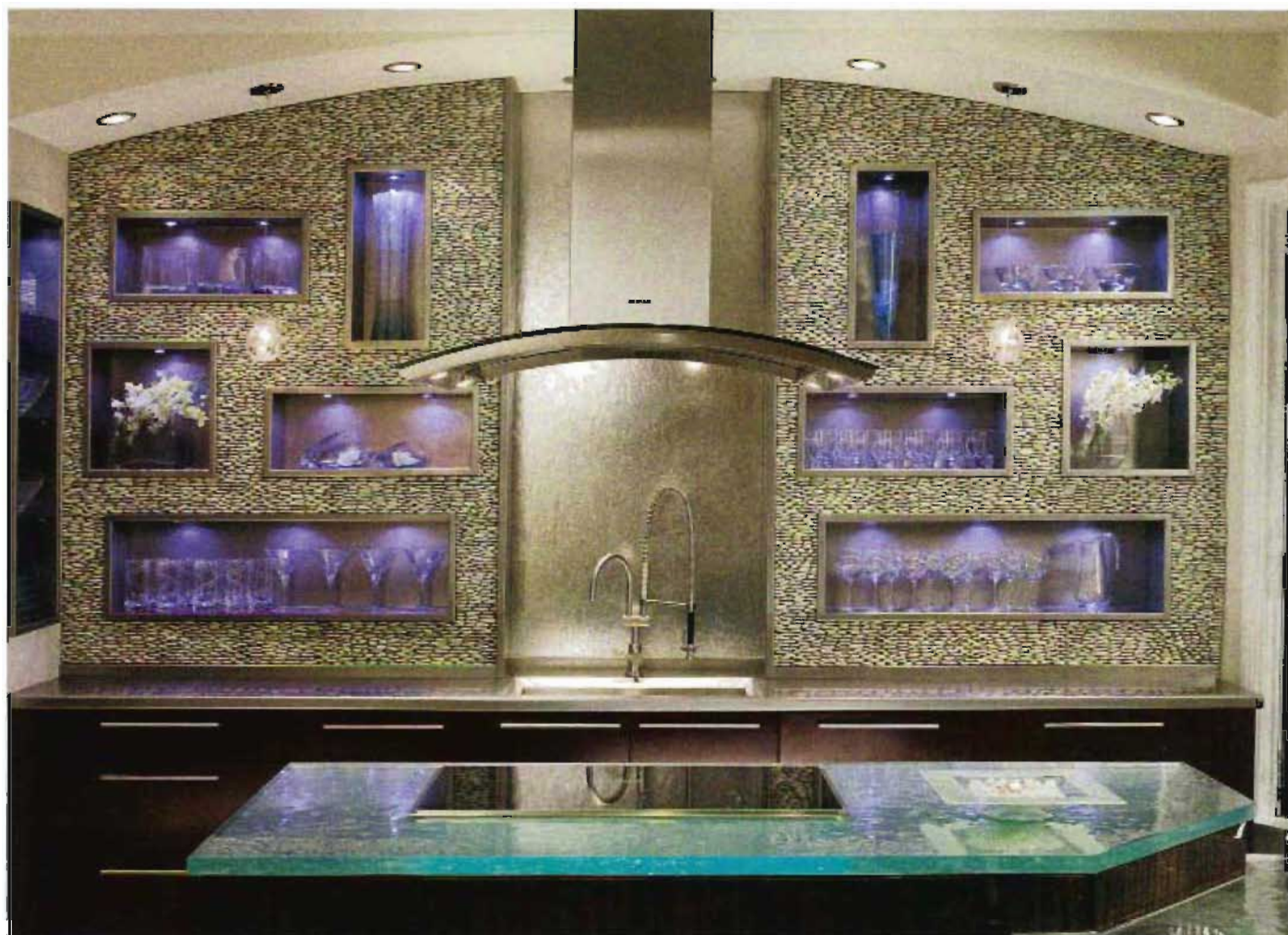
color & materials

Creative license

Contrasting textures and innovative color schemes bring a sparkle to kitchens, as these projects show







Upon reflection

Reminiscent of a cascading waterfall and rocky riverbed, this kitchen was designed to appeal to all the senses

Preceding pages and above: This kitchen is not just a case of see the difference – you can also feel the difference. To evoke a natural setting, designer Elina Katsioula-Beall of DeWitt Designer Kitchens provided a textural pebble wall and cast-glass backsplash. Blue LED lights illuminate niches in the wall. The thick, textured glass counter and table feature LED tape that casts a green glow.

Taking a green approach to kitchen design is par for the course today. But the designers of this kitchen took the idea one step further, turning to nature for inspiration.

Elina Katsioula-Beall of DeWitt Designer Kitchens says the design team wanted to create an innovative kitchen in sync with the green consciousness of the times.

"We were particularly entranced by the idea of a quiet waterfall cascading through rocks. This helped determine the material selection," she says. "Glass has the closest association with water, and we felt the mirroring effect of water could be best

represented by polished stainless steel. Hence our waterfall is a vertical, watery glass backsplash, which flows down through a mass of grey rocks to a stainless steel sink."

To enhance the effect, the glass is backed with polished stainless steel. The river rock walls incorporate stainless steel niches, designed to emulate natural rock crannies.

"The glass accessories – dishes, bowls, wine and water glasses – are an expression of water splashes settling in those crevices. These niches provide sufficient storage for everyday kitchenware," says Katsioula-Beall.



Kitchen designer:

Elina Katsioulou-Beall, CKD,
DeWitt Designer Kitchens
(Studio City, CA) with Sarah
Michalowski, CKD

Cabinets: Perimeter in cherry
Wineberry by Columbia
Cabinets; island from Symphony
line in rosewood veneer by
Corso; wall niche storage by CAC
Fabrication

Island and table countertops:
Think Glass Crystal Granula
backed with polished
stainless steel

Perimeter countertops:
Stainless steel by
CAC Fabrication

Backsplash: Waterfall Cascade
glass backed with polished
stainless steel by Kazanjian
Glass Studios

Sink: Kohler Posio

Faucet: Dornbracht Tara

Stone walls: Cascade grey river
rock by Creative Environments

Lighting: LED gimble chrome
lights in wall niches; Eloc
halogen recessed lights in
ceiling; LED tape light inside
glass countertops; pendants
from Santa Monica Lighting &
Electrical Supply

Appliances: Miele

Story by Colleen Hawkes

**Photography by
Suki Medencevic**

The thick, textured glass countertop, which sits on stainless steel, is reminiscent of a small pool of water, which pours down to form a round table. All the glass is illuminated from within, with LED tape casting a green glow.

Reddish-brown cherry perimeter cabinets and a rosewood veneer island base reference the earth and help to ground the more ethereal elements. The curved soffit and hood were designed to soften the hard edges of the composition.

➔ To save and share this story online go to
Trendsideas.com/go/23197



Above: The solid glass table is designed to resemble a pool of water that has formed beneath the glass countertop.

Left: Dark cherry cabinets help to ground the kitchen visually. All the appliances are integrated within the cabinets. These include a Miele coffee maker, steam oven and dishwasher, which is disguised as a three-drawer cabinet.