

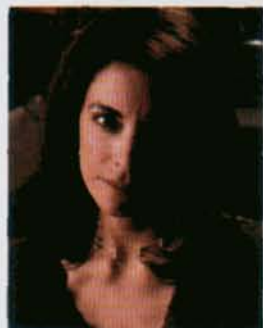
Designed for fine art collectors, this contemporary U-shaped kitchen features geometric patterns, clean lines and an inviting feel. Warm maple cabinetry conceals the functional aspects of the space. Square frosted glass cabinet doors create repetitive rhythm and are lit on the interior, casting a warm accent glow. The lighting in the cove ceiling and above and below the cabinets gives the kitchen a "lift". Vertical glass tile sparkles along with stainless steel in the backsplash areas. Round knobs and linear bar handles pronounce the geometry further. Simplicity and organization were key factors in creating this elegant, sophisticated space for this Los Angeles area family.

PHOTOGRAPHY: Suki Medencevic



PRODUCTS USED: Columbia Custom Cabinetry, maple wood in Medium Walnut finish; GE Monogram refrigerator; Viking range and hood; Miele Incognito dishwasher; Franke Little Butler Instant Hot, stainless steel sink and faucets; Emerald Pearl granite countertops; Walker Zanger Weave Sandstone tile; Travertine flooring.

— ELINA KATSILOULA-BEALL/SARAH GRACE MICHALOWSKI —



Elina Katsioulou-Beall, MFA, CKD (left) fuses kitchen design with her classical Greek training, design education at Yale and an awarded scenic design career in theater and TV. As president of DeWitt Designer Kitchens, Elina carries on the legacy of late founder, DeWitt Beall and his 40-year design career, including many publications and TV appearances. Sarah Grace Michalowski (right) blends her degrees in Architecture, Art and Interior Design to create dynamic, functional spaces for dozens of happy clients. As an up-and-coming designer, Sarah is teaming up with Elina to make the world better, one kitchen at a time!

DEWITT DESIGNER KITCHENS

12417 Ventura Boulevard, Studio City, California 91604 (818) 505-6901
www.dewittdesignerkitchens.com