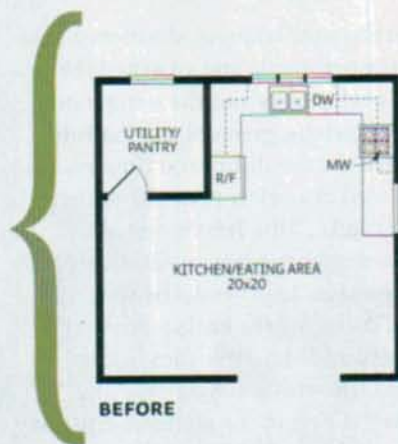


1 kitchen, 2 budgets

A makeover to fit your budget—high or low.

WRITTEN BY
MEGAN BOETTCHER



Done with Drama

A misfit kitchen gets a makeover that takes it from a dated dud to a dramatic Art Deco design.



Elna Katsioulou-Beall, a certified kitchen designer (CKD) and member of the National Kitchen & Bath Association (NKBA), is President of DeWitt Designer Kitchens in Studio City, California.

“A kitchen breathes when it is beautiful in design, function, and style. It transcends the ordinary and feels fresh.”

—ELINA KATSILOULA-BEALL, CKD

the problems

▪ LACK OF STYLE

The kitchen is old, and materials are worn out. It is missing a sense of architectural style and personality.

▪ LIMITED SPACE

The countertop area is inadequate for today's prepping and cooking needs. It's very difficult for more than one cook to work in the room.

▪ POOR CONFIGURATION

Space is wasted in the middle of the room. It is too small for an island, and the U-shape configuration places appliance doors in conflict with one another.

▪ OUTDATED CABINETRY

The cabinets have many layers of paint, and the colors are outdated. The cabinets are also lacking functional storage.

▪ TOO-BRIGHT APPLIANCES

Bright white appliances stand out in sharp contrast to the colored cabinetry.

1 kitchen, 2 budgets

Value



the solutions

■ ADD SPACE

Borrowing space from the adjacent utility closet and angling the wall allows enough room for an island with a prep sink and a cozy café counter. Bumping out the sink window also adds to the open feel.

■ REARRANGE PLACEMENT

Moving the range-wall window opens a wall for additional cabinetry and counter space. It also allows for the range to slide to the right, eliminating the conflict with the dishwasher and oven doors.

■ REFRESH CABINETRY

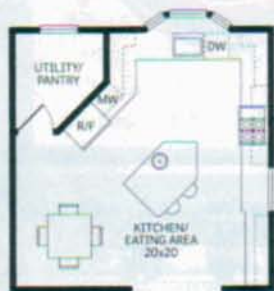
The new cabinetry is dark and sleek. It infuses the room with energy.

■ INCLUDE STYLISH DETAILS

A black trim line cuts through the contrasting travertine tiles on the backsplash to evoke an architectural look.

■ USE REFLECTIVE SURFACES

Black granite countertops, stainless-steel appliances, and a sleek backsplash complement the Art Deco style.



AFTER

Simplice pull-down faucet
K-647 | \$295
Kohler Co.
800/456-4537
us.kohler.com

Culinaire undermount, dual-level sink | \$742
American Standard
800/442-1902
americanstandard-us.com

GE Profile freestanding, double-oven range
PGB918SEMSS | \$2,199
GE
800/626-2005
geappliances.com

Slab door cabinetry LP112H | prices vary
Columbia Cabinets
604/850-3538
columbiacabinets.com

value budget breakdown

APPLIANCES

GE Profile bottom-freezer	\$ 2,549
GE Profile freestanding, double-oven range	\$ 2,199
GE Profile fully integrated dishwasher	\$ 1,329
2 InSinkerator Evolution Compact disposals	\$ 338
GE Profile microwave oven	\$ 269

CABINETRY

Columbia Cabinets in dark zebrano melamine	\$26,740
--	----------

SURFACES

Black granite countertops	\$ 2,430
18x18-inch travertine tile flooring	\$ 1,625
Travertine, black tile, and metal backsplash	\$ 1,375

MISCELLANEOUS

American Standard Culinaire sink	\$ 742
Elkay Lusterstone single-bowl sink	\$ 419
Kohler Simplice pull-down faucet	\$ 295
Kohler Simplice faucet	\$ 295

TOTAL

\$40,605

prices are estimates, excluding installation